



KEEN PUMP SOLIDS-HANDLING PUMPS - A COOLER WAY TO MOVE SOLIDS!



KEEN PUMP'S BEARING PROTECTION PROGRAM

Keen's Motor Grounding Ring protects the motor from harmful shaft voltages produced by VFD drives.

Safely conducts the harmful voltages to the grounding ring adding protection for the bearings and extended life.

1

DOUBLE ROW BEARINGS

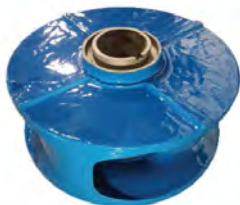


Heavy Duty Bearings to handle the toughest performances.

- High Pressures
- High Flows

- Handles both Axial and Radial loads in both directions at the same time.
- Double Row Angular Ball Bearings have two rows of balls arranged back-to-back.

3



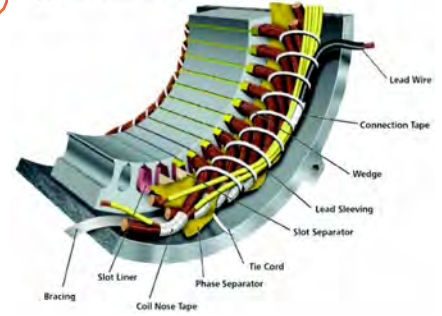
CERAMIC COATING - IMPELLER AND VOLUTE CASTING

The ultimate indestructible ceramic coated impellers and volutes for Keen's Solids Handling pumps. This allows the pump to operate in any condition without any problems! Impressive sand, grit, abrasion and cavitation resistance!

4

HEAVY DUTY MOTOR

Applications in Electric Motors:



- Class "N" Motors for Keen's Solids Handling pumps.
- Highest temperature construction (200 degrees celcius) for motors
- Class "N" Construction is the best in the industry. Protects your motor from over heating and provides extended motor life. Motors are operating at higher temperatures due to:
 - Longer run times
 - Motor housing not submerged
 - Continuous

2

CASTINGS

ASTM - Class 35 high tensile strength castings.

5

DURABLE POWDER COAT FINISH

Holds up to the toughest environmental conditions.

6

DUAL SHAFT SEALS

Twice the protection quality silicon carbide faces, viton elastomers, stainless steel construction.

7

