



### 1. WATERTIGHT CABLE ENTRANCE

Agency-approved, watertight strain relief cord grips with compression grommets protects outer cord jacket. Epoxy-filled inner cord cap provides anti-wicking moisture protection to the motor even if the power cable is cut or damaged. 40' UL power & control cords. Additional sealing is accomplished by wire terminal plate, separating cord cap from motor housing.

### 2. MODULAR PUMP DESIGN

Commonality of parts across the Keen product line minimizes the amount of parts required for servicing. Heavy-duty ASTM A48, Class 35 cast iron components.

### 3. STRONG MOTOR

Powerful high-torque motor for strong pumping. 208/230/460 Volt, 3-phase. Slip-Fit stator efficiently transfers heat to cast housing. Class N construction with overload protection in oil-filled chamber for cool operation and long motor life. Inverter-duty capable for VFD / soft start operation.

### 3A. OIL

Proprietary Keen oil ensures industry-low operating temperatures.

### 4. SOLID BEARING SUPPORT

Two-bearing design featuring high load-rated angular contact for 100,000 hour B-10 life.

### 5. SEVERE DUTY DUAL MECHANICAL SEALS

Dual silicon carbide mechanical shaft seals w/ Viton® Elastomers provide twice the moisture and grit protection for the motor. Dual seals are housed in a secondary oil-filled seal chamber. Tougher silicon carbide seals better handle sand, grit and abrasive materials. \*\* Additional bronze labyrinth seal for explosion-proof model.

### 6. MOISTURE DETECTION

Seal leak probe signals alarm in control panel for scheduled maintenance.

### 7. NON-OVERLOADING HYDRAULIC DESIGN

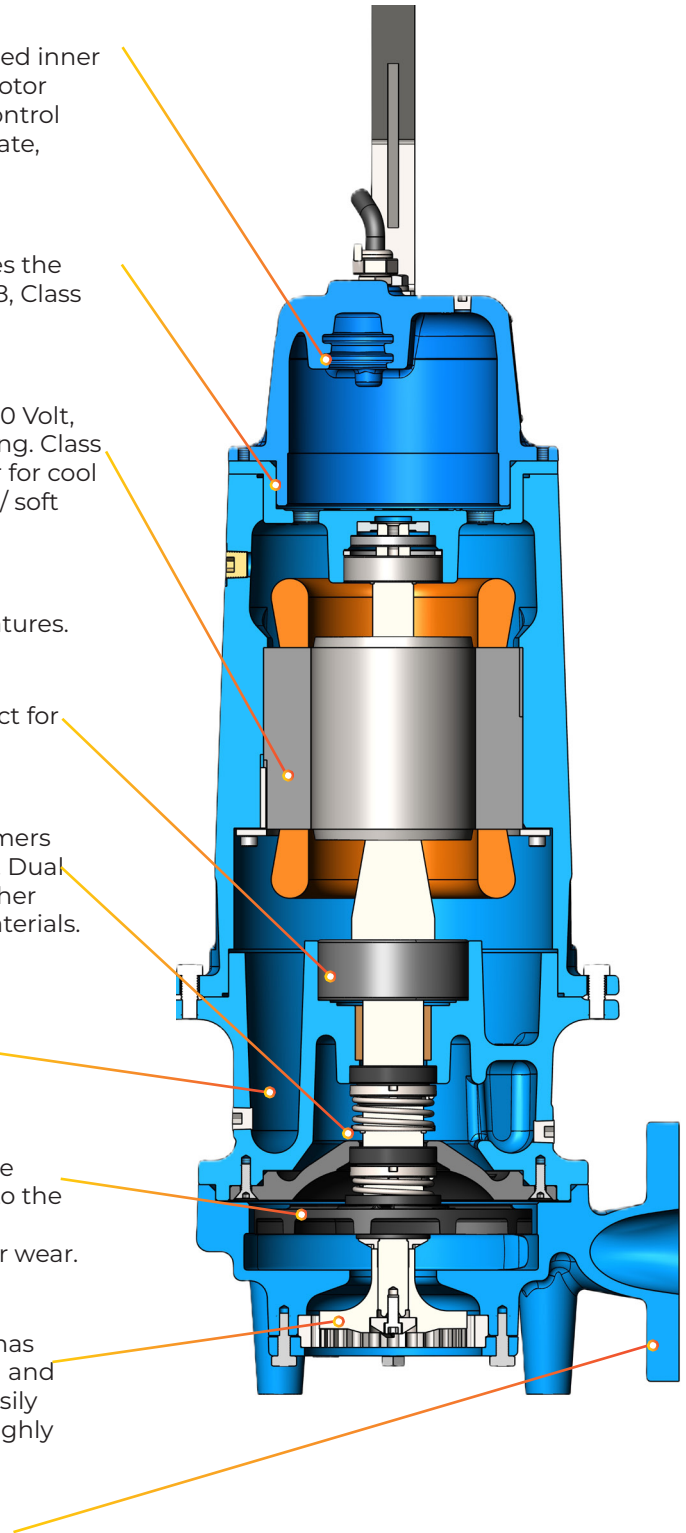
Recessed centrifugal impeller allows 100% performance curve operation from shut-off to maximum flow without damage to the pump or system. The recessed, vortex impeller is out of the passageway of fluid flow, eliminating concerns of blockage or wear.

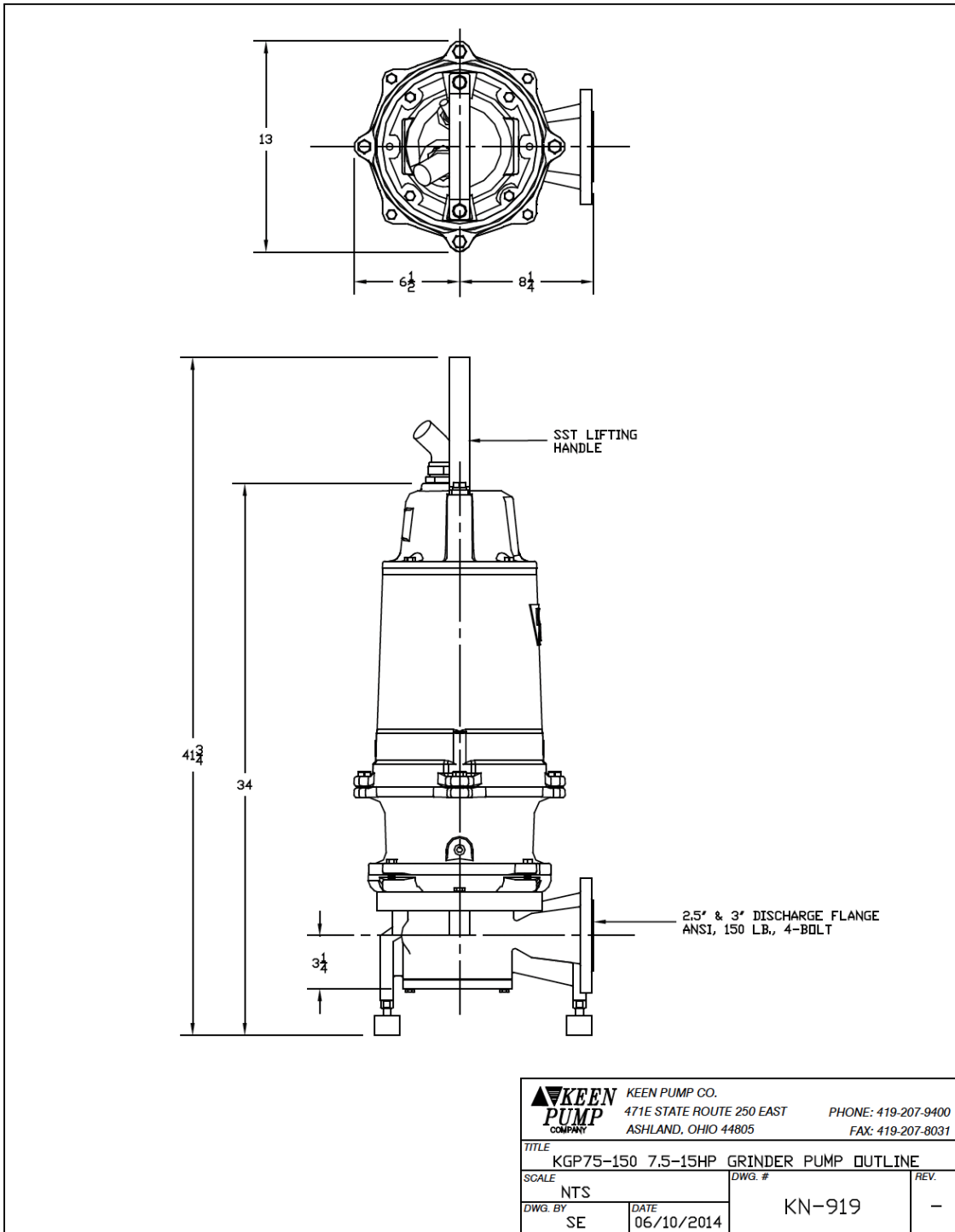
### 8. PROVEN GRINDER ASSEMBLY

Hardened (Rockwell 58-60) stainless steel grinder assembly has 30+ years proven field experience. The reversible grinder ring and grinder impeller effectively reduce solids into a fine slurry, easily passable in a piping system without concerns of clogging. Highly efficient 17,250 cuts/second.

### 9. STANDARD FLANGE CONNECTION

2-1/2" / 3" Horizontal, Class 125 ANSI discharge flange. Industry standard, 4-bolt pattern.





PUMP SERIES

KGP

SUBMERSIBLE GRINDER PUMPS

## LIFTOUT DIMENSIONAL DATA

